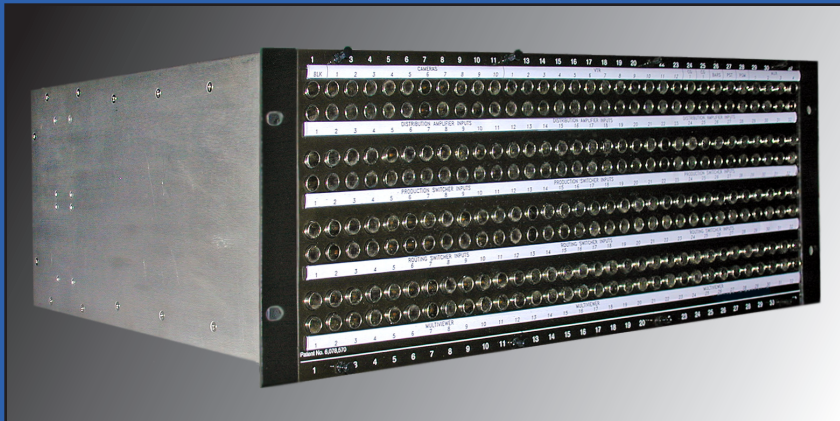
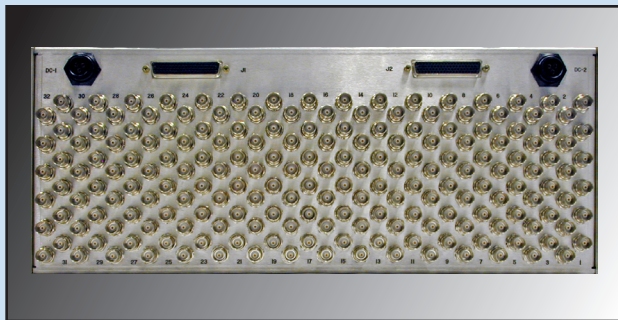


# PA3200Lite Patchable Distribution Amps

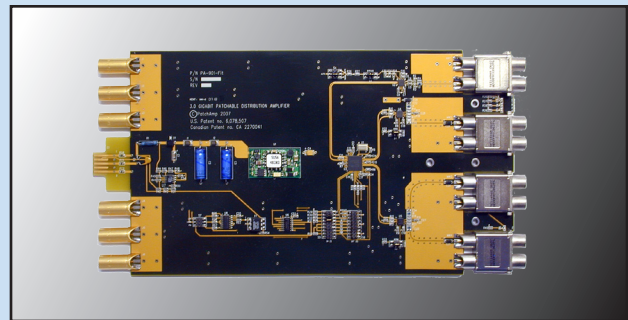


4 (2x32) patchbays with integrated distribution amplifiers

- Up to 32 1-in by 5-out PatchAmps
- Compact Design
- Eliminates DA trays, Cabling and Connectors
- 3Gb HD, HD, SD, Analog Video, AES and Analog Audio Formats
- Signal Monitoring is Standard
- Lightweight
- Low Power Consumption



rear panel



PA901 distribution amplifier with patches

## SPECIFICATIONS

### Mechanical

PA3200Lite	
Height	7 inches (4RU)
Width	19 inches
Depth	16 inches
Nominal Weight	38 lbs. FULLY LOADED

### Electrical

PA3200Lite	
Input	Differential and Isolated
Connectors	BNC, 75 ohm
Number of inputs	up to 32
Number of outputs	up to 160

### Power

Type	External, 48Vdc
Input Voltage	90-264 Vac, 47-63 Hz, Single Phase
Redundancy	N+1, hot swappable modules
Power Factor	>.99
EMI	complies with EN55022 & FCC Class A

The PatchAmp PA3200Lite Video frame houses (4) 2x32 patch panels integral to 32 DA cards in 4RU weighing just under 40 lbs. The PatchAmp PA-901HD 1x4 video distribution amplifier is multi-rate upto 3Gig, guaranteeing that every signal is equalized and relocked at the patch bay. The SDI and analog video distribution amplifiers are available in 1x5 configurations.



PatchAmp  
 20 East Kennedy Street  
 Hackensack, New Jersey 07601  
 phone (201) 457-1504 fax (201) 457-1507  
[www.patchamp.com](http://www.patchamp.com)