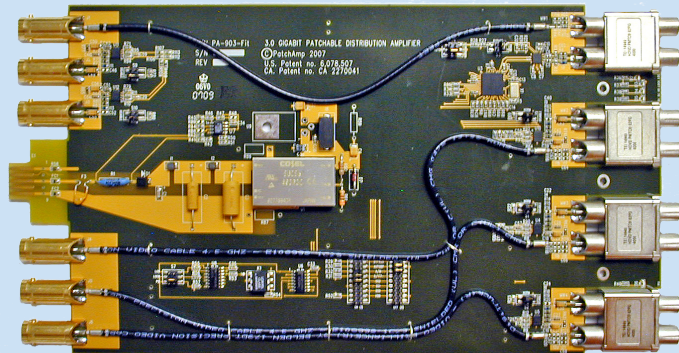


Patchable Distribution Amplifier

Model: PA-903*Lite*

- Single 1x5
- True 75 ohm coaxial in and out
- Auto equalizing
- Polarity matched input/output
- Multi-rate reclocking up to 3GB
- Supports all HD/SD/ASI formats
- Removes high frequency jitter
- Compatible with PA3200*Lite*
- Lock and EQ warning indicators
- Signal meter and fault outputs



Technical Specifications:

Input

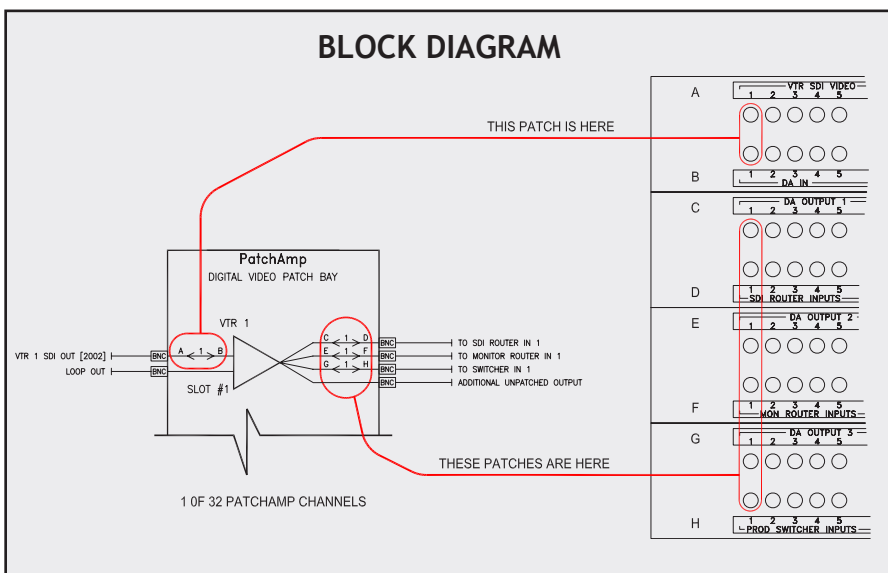
| | |
|-------------------|--------------------|
| Number of Inputs | 1 |
| Input Connection | 75 Ohm BNC |
| Input Impedance | 75 Ohm |
| Input Return Loss | >18dB up to 1.5GHz |
| Signal Level | 800mV +/-10% |

Output

| | |
|---------------------|--------------------|
| Channels | Single |
| Outputs per Channel | 5 |
| Output Connection | 75 Ohm BNC |
| Output Impedance | 75 Ohm |
| Output Return Loss | >18dB up to 1.5GHz |

Performance

| | |
|-------------------|---|
| Standards | SMPTE 424M, 292M, 259M, 344M |
| Data Rates | 143, 177, 270, 360, 540, 1483.5, 1485, 2970 Mb/s, ASI |
| Max Cable Length | 230 ft. @ 2.97 Gb/s Belden 1684A 460 ft. @ 1.485 Gb/s Belden 1684A 1,150 ft. @ 270Mb/s Belden 1694A |
| Equalization Mode | Automatic Multi-Rate |
| Reclocking | Multi-Rate |
| Signal Level | 800mV Nominal |
| DC Offset | 0V +/-0.5V |
| Rise & Fall Time | 200ps nominal |
| Overshoot | < 10% of amplitude |
| Wideband Jitter | < 0.2 UI |



PATCHAMP

PATCHING & DISTRIBUTION TECHNOLOGY

20 East Kennedy Street, Hackensack, NJ 07601
201-457-1504 Fax: 201-457-1507
www.patchamp.com